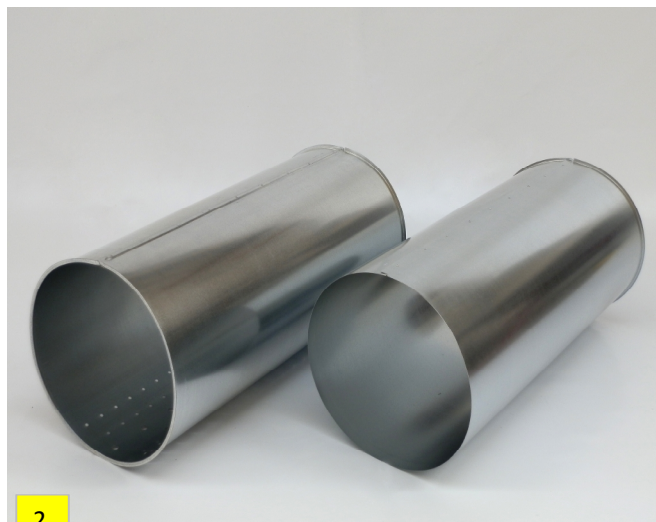


*Assembly sequence for telescopic adjusting modules*

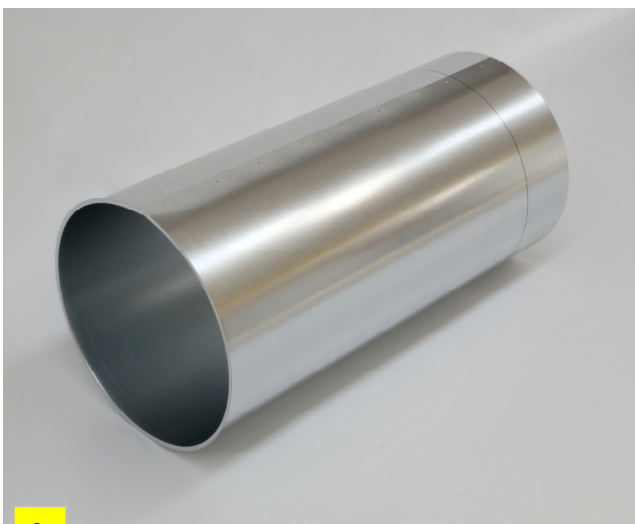


1



2

- 1 The telescopic modules (to the right) can be recognized from the standard modules (to the left), as they have the 8mm folding on just one side, as opposed to having it on both sides. Other than that, they are identical to the standard duct modules.
- 2 Close the telescopic module (with folding on just one side) with the rivets in the same way as you would do for the standard modules (with folding on both sides).



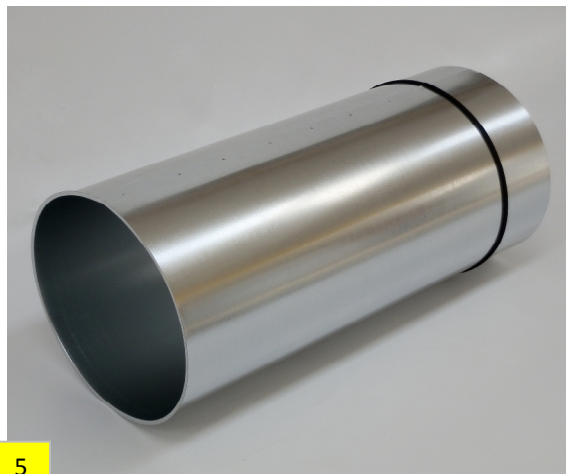
3



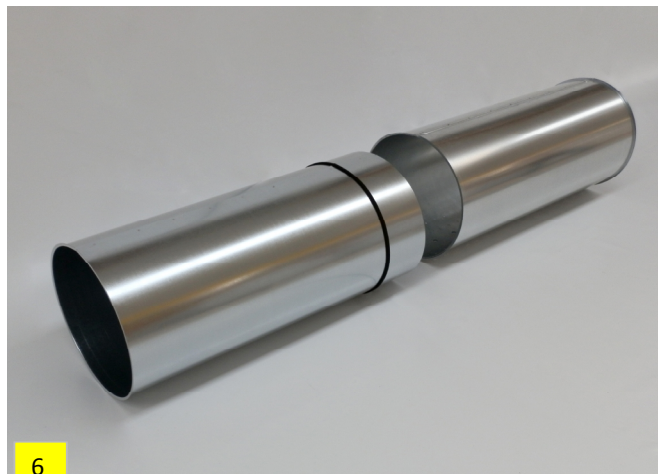
4

- 3 Mark the telescopic module in the exact point where it will need to be cut. The telescopic module has to be inserted into the following standard module for a length included between 100mm and 250mm.
- 4 Cut the module following the marked line.

*Assembly sequence for telescopic adjusting modules*

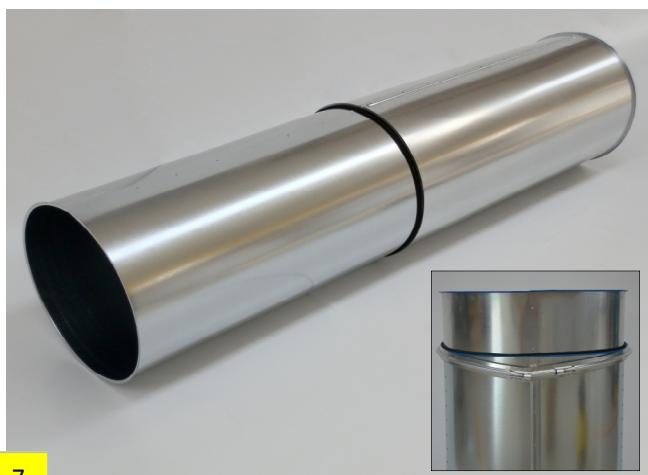


5

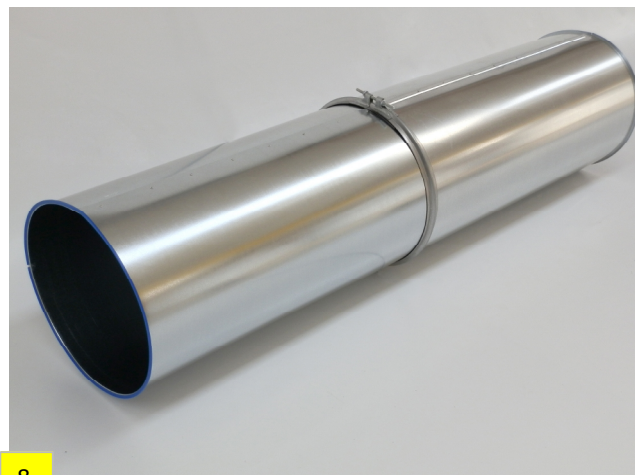


6

- 5 According to the desired length, apply the provided holding gasket.
- 6 Fit the telescopic module into the standard one, until the gasket is properly compressed between the two.



7



8

- 7 Install the fastening collar used for joining the modules together, tightening its screw and nut in order to properly connect the modules together.
- 8 This is the final result of the telescopic module fitted into the standard one.